

Montana Western Region Hazard Mitigation Plan

Kick-Off Meeting Summary

May 26, 2022, 10:30-12:00 pm

Virtual Webinar via Zoom

Introductions and Opening Remarks

The State of Montana has recently undertaken an effort to create regional hazard mitigation plans covering the entire state, splitting the state into 3 separate regions each with its own hazard mitigation plan (HMP). The Western Region held a kickoff meeting for this planning process on May 26th, 2022, facilitated by Wood Environment & Infrastructure Solutions, Inc. (Wood), the consulting firm hired by Montana Disaster and Emergency Services (DES) to facilitate the planning process and develop the regional HMP. The meeting was held virtually via Zoom. Over 160 people attended the webinar, primarily representing county, tribal and municipal governments as well as various stakeholders including representatives from Montana DES as well as the Wood consultant team. Following introductory remarks by Montana DES Mitigation Coordinator, Nicole Erickson, Amy Carr, Lead Planner, (Wood) introduced herself, the Wood team, and Jeff Brislaw, the Wood Project Manager, who explained that this is one of the three regional plans Wood is managing across the State of Montana and thanked everyone for their participation.

The key discussion is summarized below; additional details can be found in the meeting PowerPoint presentation. The meeting was also recorded. An interactive polling tool called Slido was used to gather feedback from the group throughout the meeting. The responses to the Slido Poll questions can be found in the attached document. After an icebreaker test question, the group was polled "Have you participated in a hazard mitigation plan before?" 55% responded Yes and 45% No.

Hazard Mitigation and Resilience Planning

Following introductions, Amy Carr with the Wood team gave a presentation on the concept of hazard mitigation planning and its importance. Mitigation is any sustained action taken to reduce or eliminate long-term risk to human life and property from natural or human-caused hazards. Mitigation Planning guides mitigation activities in a coordinated and economic manner to make Montana more disaster resilient. The U.S. Disaster Mitigation Act of 2000 requires state and local governments to draft and adopt a hazard mitigation plan, and update it every five years, to maintain eligibility for FEMA mitigation assistance grants.

Amy displayed a slide which showed the trends resulting in increased disaster cost. She explained there are trends resulting in increased costs for disaster response and recovery related to population growth and the increase in the types of events we experience as a community. More people are living in hazardous areas and there is an increasing exposure of buildings, people, and infrastructure to risk, as evidenced by the increasing frequencies of billion-dollar disasters nationwide. The COVID-19 Pandemic is a good example of a circumstance that can cause a regional disruption in the community and to the economy.

Amy described how governments have a responsibility to protect their communities and we need these plans for several reasons: the plans reduce future recovery costs, we can plan around predictive events, and they guide mitigation activities in a coordinated manner. It was found that these plans are cost effective, and for every \$1 spent on mitigation, \$6 is saved in disaster recovery and response cost. Amy then explained that these plans are not a regulatory document and they do not create new laws or regulations. There is no punishment for not completing the actions outlined in the plan, they are used as planning guidelines and to brainstorm solutions to potential problems. Amy concluded this section with an overview of the key elements in the Western Montana Regional Hazard Mitigation Plan. Amy described how the overall purpose of this process is to create one regional plan for the Western Region. Amy emphasized the benefits of regional plans because hazards do not follow jurisdictional boundaries and generally affect multiple cities or counties at once. A regional plan such as this one is beneficial because it can strengthen communication between jurisdictions before a disaster happens. In turn, this creates greater resiliency within the region.

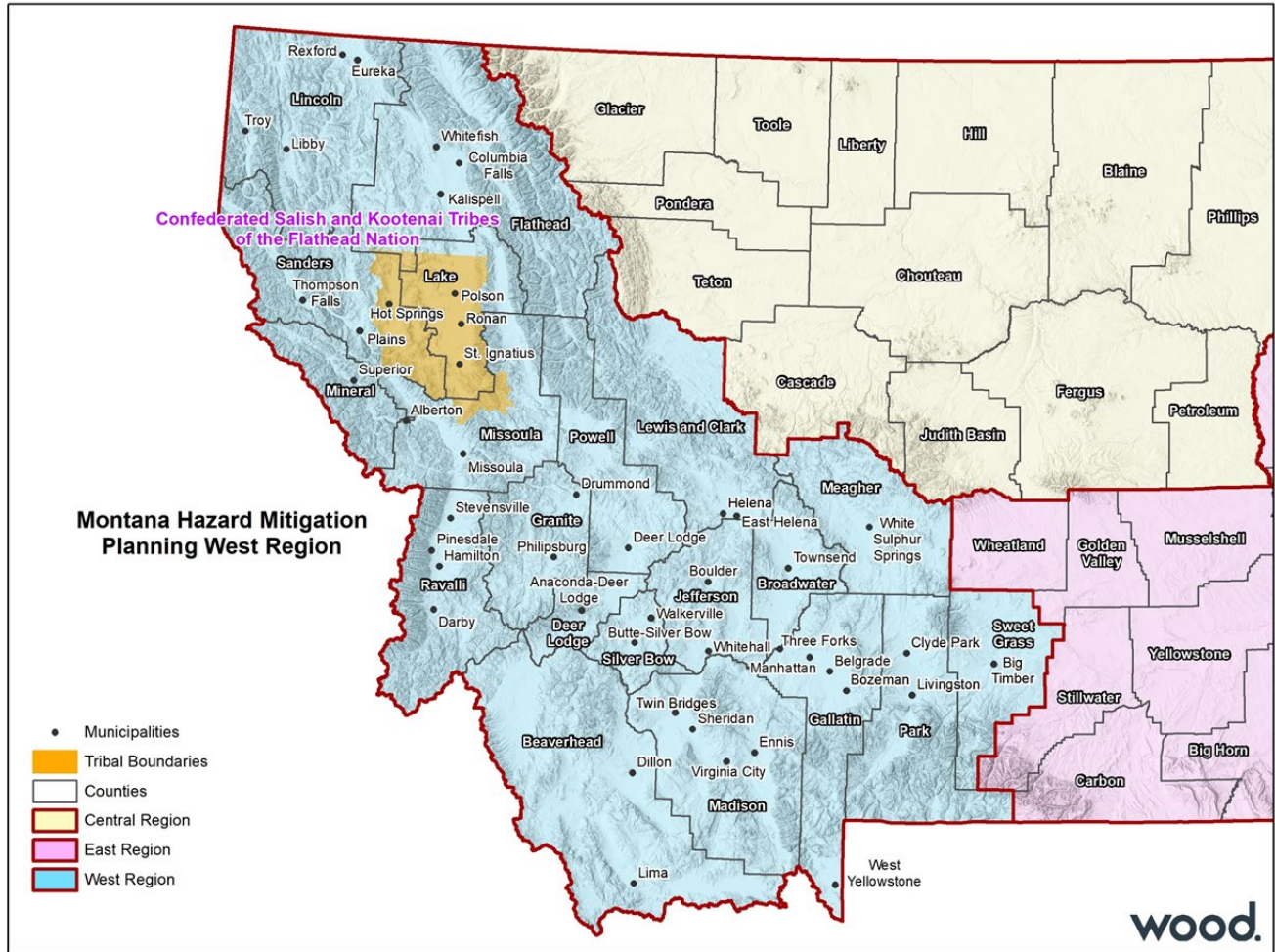
Regional Planning Process Overview

Amy reviewed a slide with the Federal Emergency Management Agency (FEMA) guidance breakdown of the hazard mitigation planning process. FEMA originally outlined 4 phases of the planning process. In 2013, FEMA expanded this process by creating 9 additional steps, which fall into the 4 phases. Wood also considers the 5 Regional Resilience guidelines developed by the U.S. Environmental Protection Agency. Amy described these 5 steps and how they mesh with and complement the FEMA process.

FEMA 4 Phases	FEMA 9-Steps	EPA Regional Resilience Toolkit
1: Organize Resources	1. Determine the Planning Area and Resources	1) Engage: Engagement for Resilience
	2. Build the Planning Team	
	3. Create an Outreach Strategy	
	4. Review Community Capabilities	
2: Hazard Identification & Risk Assessment	5. Conduct a Risk Assessment	2) Assess: Conduct Vulnerability Assessment
3: Develop a Mitigation Strategy	6. Develop a Mitigation Strategy	3) Act: Identify and Prioritize Strategies
		4) Fund: Fund for Action
4: Plan Adoption, Monitoring, and Evaluation	7. Keep the Plan Current	5) Measure: Evaluate Results and Refine Methods
	8. Review and Adopt the Plan	
	9. Create a Safe and Resilient Community	

Phase 1, Step 1: Determine the Planning Area and Resources

Amy displayed a slide of the Western Region planning area in Montana. All but two counties in the Western Region are participating in the planning process and adoption of this regional hazard mitigation plan. The figure also depicts the other two regional planning areas (Eastern Region and Central Region) that Wood is consulting.



Phase 1, Step 2: Hazard Mitigation Planning Committee

The Western Region Hazard Mitigation Planning Committee (HMPC) consists of representatives from each of the 52 cities, towns, counties, and tribes which make up the Western Region, shown in the image below. Additionally, tribal, county, and municipal staff, as well as stakeholders within each county and reservation, will be participants in the planning process. Any noted that every update cycle is an opportunity to include additional local government participating jurisdictions, which are defined by FEMA as any entity with a governing board. This includes special service districts. Because this is a “regional” process the planning committee is structured somewhat differently from local hazard mitigation plans. There is regional oversight by MT DES and within each region there will be Subregions organized to group counties with similar hazards or geography (shown below; Note: Gallatin and Missoula counties have opted to continue with individual planning efforts and will participate as interested stakeholders but not as jurisdictions in the region plan). Each County or Tribe will be asked to develop a county or tribal planning team that consists of county and tribal staff, municipalities and other regional or organization stakeholders. This is also where a lot of the work will be done related to developing mitigation actions.

Western Region		
W1	W2	W3
Lincoln	Ravalli	Beaverhead
Flathead	Granite	Madison
Sanders	Powell	Broadwater
Lake	Lewis and Clark	Meagher
Mineral	Anaconda Deer Lodge	Park
CSKT	Butte Silver Bow	Sweet Grass
	Jefferson	

Currently the Hazard Mitigation Planning Committee is working through Steps 3-5 of the 9-step planning process with the next steps of developing an outreach strategy, reviewing the Western Region’s capabilities, and conducting the Risk Assessment. Step 6 involves developing a mitigation strategy. Steps 7 and 8 involve final plan adoption and implementation and ensuring the adopted plan builds a safer and more resilient community.

Phase 1, Step 3: Public Outreach Strategy

Amy emphasized the importance of including the public in the planning process to strengthen community support for the plan and ensure the plan is meeting the specific needs in the region. FEMA requires two opportunities for public involvement during the planning process: during the draft stage and prior to plan approval. Public involvement will include online surveys during the planning effort. Wood will develop these surveys and look to members of the HMPC to advertise the surveys and distribute them to their respective communities. In addition, the County/Tribal Planning Teams are asked to post the draft plan online and solicit comments prior to the submission to the State and FEMA. The Wood team will be responsible for documenting this process; this may involve documenting specific meetings with stakeholders or other organizations. County and Tribal Planning Teams are encouraged to provide additional outreach beyond the regional planning outreach. An example may be noting the Regional Hazard Mitigation Plan at an already scheduled public meeting.

Phase 1, Step 4: Capabilities Assessment

Amy explained that the team will examine existing policies and programs and evaluate the effectiveness of the mitigation gaps and shortfalls to see where there are areas for improvement. She stated the Wood team will also look at each jurisdiction’s fiscal abilities to understand where there could be funding options for mitigation not limited to grants. The capability assessment is being aligned with current FEMA planning guidance and will be an area of focus during the update.

Phase 2, Step 5: Risk Assessment

Jeff Brislawn (Wood) discussed phase 2 of the planning process, which involves conducting a risk assessment. Jeff explained the three components of the risk assessment: hazard (what can happen here), vulnerability (what will be affected), and community capability (what are our existing capabilities to reduce risk). He covered the aspects of natural hazards included in the assessment and how those hazards overlap with community assets. He discussed where there is overlap between the hazards and assets is where we have risk (e.g., potential for losses). Most counties within the Western Region also have existing hazard mitigation plans in place. These resources, as well as HMPC input will be used to develop a list of hazards which will be profiled in the plan.

The vulnerability assessment looks at a range of assets in the Region: residential/commercial structures and critical facilities and infrastructure. The Wood team will align this update with the more recent FEMA Community Lifeline framework. Understanding risks to lifeline facilities and identifying ways to minimize those risks with mitigation actions, will better position the plan for grant funding. He also stated we will look at development trends and natural resource areas in terms of assets that may warrant protection from hazard impacts.

Phase 3, Step 6: Mitigation Strategy

The Mitigation Strategy begins with reviewing the plan's existing goals, which are broad overarching statements of what we want to achieve. Goals are supported by mitigation actions, which are specific and measurable. Jeff emphasizes that the goals should reflect the risk assessment, with specific actions targeting the greatest risk hazards and areas. Goals and objectives will be updated later in the planning process. The region can choose to create one set of goals and objectives for the region, or different goals specific to each County and Tribal Planning Teams or both, depending on the preferences of the HMPC.

Jeff shared different reference guides for mitigation action alternatives, such as FEMA's Mitigation Ideas document and the National Flood Insurance Program Community Rating System (NFIP CRS) guidance. The HMPC will need to review and select the alternatives for new actions as part of the plan update process. Each jurisdiction will need at least one new action, and actions will need to be prioritized. This will be done by applying selection and prioritization criteria, such as whether it will work, is it cost-beneficial, affordable, legal, and fair etc. This process will occur at a future planning meeting/workshop. The HMPC will also need to provide information on the status of actions from existing hazard mitigation plans (HMP). Jeff emphasized that there are no expectations to have all, or any, of these previous actions complete. This information will only be used to see what strategies worked best and where improvements can be made.

Phase 4, Steps 7 & 8: Plan Maintenance and Adoption

Jeff explained there will be four drafts of the plan: (1) Internal HMPC Review; (2) Public Review (3) State Review, and (4) FEMA Review. As part of the first review, the HMPC will review and agree upon plan maintenance procedures. Each county, tribe, and municipality within the Western Region will need to adopt the plan to secure the buy-in for the process. Jeff then explained the importance of continual monitoring, evaluating, and updating of the plan to maintain its effectiveness.

Regional, County, & Tribal Hazard Mitigation Planning Committees

Amy then reviewed the role of and responsibilities of each group within the HMPC. The county and tribal DES Coordinators will be the main points of contact with respect to meeting logistics and coordinating local planning teams. Each coordinator will convene a County Planning Team (CPT) or Tribal Planning Team (TPT) within each participating entity. The CPTs or TPTs will include members of appropriate departments, e.g., road and bridge, planning, public works, police/fire/public safety, and emergency management and include municipalities and could include special districts (e.g., fire and school).

The coordinators will be responsible for identifying members of their Planning Teams and assisting with meeting logistics. The CPTs and TPTs are responsible for participating in the planning process, assisting in the updating the plans content and reviewing the draft plans to ensure it meets specific needs and local issues. Finally, each county, municipality and tribe will need to formally adopt the plan by their local governing body. By doing so the plan will maintain eligibility for FEMA mitigation funds. Montana DES will provide oversight and Wood will facilitate the process, gather data, and write the plan.

Amy emphasized the importance of including stakeholders in the planning process. She reviewed a slide listing various stakeholders who will be included in the process, which lists a variety of representatives from the state or federal government, private, non-profit entities who will be affected by the assessment and potential strategies in this HMP. She then outlined the criteria for identifying stakeholders and used Slido to ask the group if there are any other key stakeholders that should be involved in the process. Responses include the Montana National Guard and Senior Citizen Organizations. See attached document for a complete list of responses.

The participation specifics for the participating jurisdictions, which includes all county, municipalities and tribes that have chosen to actively participate in this process and adopt the final approved plan, include:

- Attend and participate in planning meetings/workshops
- Provide available data requested of the County and Tribal coordinator and Wood
- Provide input on local mitigation strategy (actions/projects)
- Advertise and assist with public input process
- Review and comment on draft plan
- Coordinate formal adoption

Stakeholders, which include representatives from the state or federal government, private, non-profit entities or other interested organizations have various options for their level of participation:

- Attending planning meetings
- Providing data and information
- Partner on mitigation efforts
- Review the draft plan

Review of Identified Hazards

Amy then reviewed the identified hazards listed in the previous HMPs from jurisdictions in the Western Region. The top 15 hazards identified in all of the previous plans were listed and compared across jurisdictions in the figure below. There were significant differences in the risk ranking of some hazards between previous HMPs, but some hazards, such as wildfire, severe winter storms, and flood were ranked as high risk across most of the jurisdictions. Amy then asked the group what additional hazard should be considered for the regional plan. Some of the responses include dam failure, cyber security, and biological outbreaks. See the attached document for all responses to the poll. Amy then reviewed a slide with the 47 declared disasters in the Western Region and asked the group what other significant hazards events have occurred in the past 5 years. The responses include Havre Snowstorm, Flathead Valley Schools Cyberterrorism Attack, and Caribou Fire in 2017. See attached document for a list of all responses to the poll question. Amy finished this section by discussing several hazard information sources, including the previous local HMPs and the 2018 State of Montana Regional State Hazard Mitigation Plan. Amy also explained that data was going to be collected to determine the county, tribal, and municipal assets that already exist.

	Wildfire	Severe Winter Storms	Flood	EQ	Severe Summer Storms	Terrorism	Drought	Landslide	Disease Outbreak	HazMat	Tornadoes & Wind	Dam Failure	Transport Accident	Avalanche	Volcanic Ash
Anaconda-Deer Lodge	H	H	H	H	M	L	M	L	M	M	M	M	M	L	L
Beaverhead	H	H	H	H	H	L	M	-	M	M	H	-	L	-	L
Broadwater	H	M	H	M	M	M	M	M	M	H	Part of Severe Storms	M	Part of HazMat	M	L
Butte-Silver Bow	H	H	L	H	H	M	H	x	M	H	Part of Severe Storms	L	M	x	x
Flathead County	H	H	H	M	M	M	x	M	H	H	M	M	H	x	M
CSKT	H	H	M	M	M	L	L	H	M	H	M	M	H	-	L
Granite	H	H	H	M	H	L	H	L	M	M	H	M	-	L	L
Jefferson	H	H	H	M	H	M	H	L	M	H	H	H	x	L	L
Lake County	H	H	M	M	H	M	H	M	M	H	H	M	Part of HazMat	-	x
Lewis and Clark	H	H	H	H	H	M	H	x	M	M	H	M	x	x	x
Lincoln	M	M	H	L	M	M	-	L	H	H	M/H	M	H	-	x
Madison	H	M	H	H	-	L	M	L	M	M	-	-	L	L	L
Mineral	H	H	H	L	H	L	H	L	L	H	H	-	Part of HazMat	L	L
Park	H	H	H	H	M	L	M	M	M	H	M	-	L	M	L
Powell	H	H	H	M	H	L	H	L	-	M	H	L	-	-	L
Ravalli	H	H	H	M	H	x	H	x	M	H	H	M	H	-	x
Sanders	H	H	H	L	H	M	H	M	M	H	H	M	H	M	x
Sweet Grass	H	H	H	x	H	M	H	M	H	M	H	H	M	-	-

Coordination with Other Agencies, Related Planning Efforts, and Recent Studies

A discussion was held on how to coordinate this planning process with other agencies, related planning efforts and recent studies to meet one of the DMA planning requirements. This is also an opportunity to

develop a holistic plan and integrate related mitigation efforts where possible. Amy asked the group what other existing or recent plans, reports, or studies should be reviewed for the planning process. Some of the responses include COOP, CWPP, Population Protection Plan, and Evacuation Plans. See a full list of responses to the poll in the attached document.

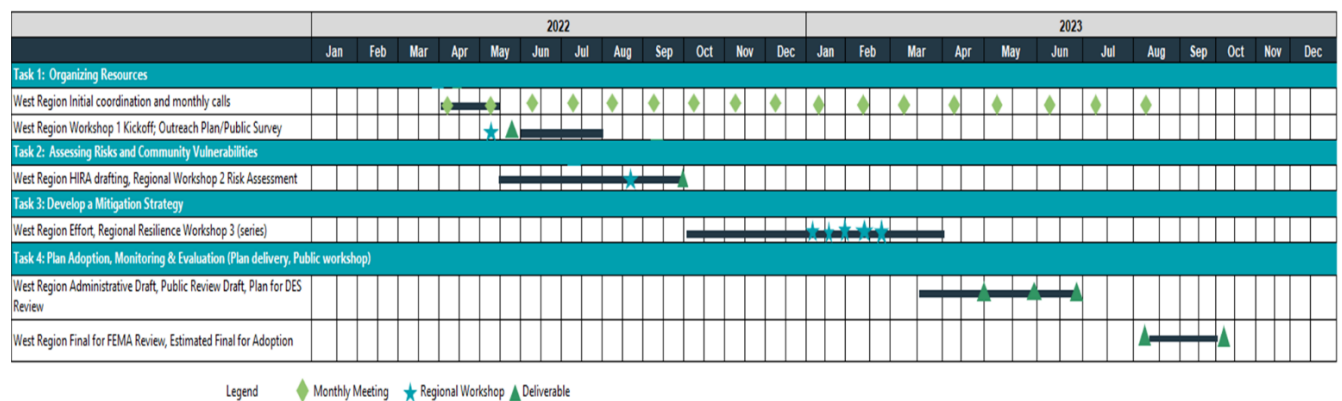
Amy explained that integrating this HMP into other plans is equally as important. She asked the group what opportunities exist to coordinate or integrate the Regional Hazard Mitigation Plan with other planning mechanisms. Some of the responses include Cross County Mutual Aid Agreements and Healthcare Coalitions. See attached document for a complete list of responses.

Planning for Public and Stakeholder Involvement

Amy explained the various tools that will be used for public and stakeholder involvement. Wood will encourage involvement through an online survey, a virtual and interactive engagement room, virtual public meetings, and a draft plan for public review. Counties and jurisdictions will be responsible for discussing the regional plan at county commissioner meetings and tribal/town council meetings. Additionally, jurisdictions will aid in posting the draft plan online and advertising, as well as host additional meetings as desired. Amy also reviewed the project website being developed by Wood to collect and store data for the planning process. Amy then asked the group what other upcoming opportunities for outreach at scheduled public meetings or events exist. Responses included Ravalli County Fair, Hamilton and Stevensville Farmers Market, and Beer Fest. See attached document for a complete list of responses.

Information Needs and Next Steps

The update will be developed over the next 9-12 months. The next meeting will focus on the Risk Assessment and Goals update, which will require the Wood team to conduct the assessment itself and complete the analysis. Other forthcoming deliverables include the public survey. The next 2 planning meetings will be in the summer and fall with exact dates to be determined; those meetings will be a combination of hybrid remote and in-person workshops.



Wood will facilitate the gathering of data and updated information from the Planning Teams. Each county, tribe and municipality will be asked to provide data based on various department inputs. This will capture

recent hazard impacts, specifically those in the last five years as well as input on capability assessment updates. GIS data collection is already in process; statewide GIS portals/data will be leveraged where possible.

Stakeholders are asked to provide additional information on hazards, related planning, and project efforts as applicable. As well as stay in the loop of the planning process via emails from the county and tribal coordinators.

Attachments

Attendance from Meeting, Chat Log, Slido Poll results, and PowerPoint Slide:

Chat Log:

10:22:33 From Lee Starkel to Everyone:

Lee Starkel

10:22:41 From Dallas and Jenny Erickson to Everyone:

I notice the calendar sent out says the meeting starts at 10 AM.

10:22:55 From Dan to Everyone:

Dan Campbell subbing in for Lorie Cotter. Superior Ranger District, Lolo National Forest.

10:23:55 From jhauer to Everyone:

echo in the room with the mic

10:24:36 From MT-DES Mitigation Team to Everyone:

The calendar invite time was incorrect. We are sorry for the error. The meeting will start at 10:30am. Just a reminder if everyone could mute their mics.

10:24:52 From Dallas and Jenny Erickson to Everyone:

Wow! That is wild! Talk about an echo!

10:27:26 From Dallas and Jenny Erickson to Everyone:

Someone needs to mute.

10:27:29 From Barry to Everyone:

Barry Fowler - Clark

10:27:35 From rlivesay to Everyone:

Rob Livesay, Planning Director, Ravalli County

10:27:38 From Melody to Everyone:

Melody Evans, Exec Asst., Liberty Place, Inc.

10:28:02 From Susan Hawthorne MT Volunteer American Red Cross to Everyone:

Susan Hawthorne, American Red Cross DAT Coordinator for Lewis and Clark, Broadwater and Meagher Counties

10:28:07 From Barry to Everyone:

Barry Fowler Clark Fork Valley Hospital Emergency Planning

10:28:10 From Kori Nobel Felix, PacifiCorp Hydro EM to Everyone:

MUTE YOUR PHONES AND COMPUTER AUDIO!!!!

10:28:14 From Andrew Dreesen, Deer Lodge Medical Center to Everyone:

Andrew Dreesen, Chief Administrative Officer, Deer Lodge Medical Center

10:28:18 From DeDe Rhodes to Everyone:

DeDe Rhodes

10:28:22 From KJOHNSTON to Everyone:

Kirk Johnston

- 10:28:23 From Diane.Fitzgerald to Everyone:
Diane Fitzgerald, NRCS District Conservationist, Jefferson County.
- 10:28:27 From Pete Melnick, Flathead County, CAO to Everyone:
Pete Melnick, Flathead County CAO
- 10:28:39 From MickP to Everyone:
Mick Paffhausen, Engineer, Vigilante Electric Cooperative
- 10:28:40 From Dina's iPhone to Everyone:
Dina Young, Town of Lima, Clerk-Treasurer
- 10:28:40 From KJOHNSTON to Everyone:
Kirk Johnston, Police Officer, East Helena PD
- 10:28:41 From DASTewart to Everyone:
Alan Stewart, Acting Superintendent, Grant-Kohrs Ranch National Historic Site
- 10:28:42 From DeDe Rhodes to Everyone:
basin County water and sewer board
- 10:28:51 From DeDe Rhodes to Everyone:
and Basin vfd
- 10:28:58 From Ginger Galiger Town of Sheridan to Everyone:
Ginger Galiger, Clerk/Treasurer with the Town of Sheridan
- 10:29:04 From Leslie Diede - GVHC to Everyone:
Leslie Diede - Greater Valley Health Center, Flathead County
- 10:29:04 From Emily Geery to Everyone:
Emily Geery, Project Manager, SWCA Environmental Consultants
- 10:29:06 From Rose Frank to Everyone:
Good morning This is Rose Frank with St Peter's Health in Helena
- 10:29:06 From Keith to Everyone:
Keith Ouzts, Chief, York VFD
- 10:29:08 From Dallas and Jenny Erickson to Everyone:
The host can mute all the phones.
- 10:29:11 From Joe Wojton MTVOAD to Everyone:
Joe Wojton President MTVOAD and Emergency Disaster Service Coordinator for Helena Corps Salvation Army
- 10:29:17 From Craig Workman (City of Whitefish) to Everyone:
Craig Workman, Whitefish Public Works Director
- 10:29:18 From Doug Dodge to Everyone:
Doug Dodge, Jefferson County DES/Fire Warden
- 10:29:23 From Dave Webster to Everyone:
David Webster - EMS director, St. Peter's Health, Helena/L&C county
- 10:29:26 From Michael (Mike) Kent, BVBoR to Everyone:
Michael (Mike) Kent, State Director for Bitterroot Valley Board of Realtors
- 10:29:26 From Zach Slattery to Everyone:
Zach Slattery, 911 Operations Manager - City of Helena/Lewis and Clark County Communications Center
- 10:29:28 From Jen Phillips to Everyone:
Jen Phillips, St. James Healthcare in Butte
- 10:29:37 From Dustin Kaste - NorthWestern Energy to Everyone:
I believe it is *6 to mute phone when calling in.
- 10:29:45 From Jess Secrest to Everyone:
Jess Secrest
- 10:29:46 From Will Kussman to Everyone:
Will Kussman -- St. Peter's Health Helena
- 10:29:48 From Terry to Everyone:

Terry Wiegand Fire Chief

10:29:48 From Worby McNamee to Everyone:
Worby McNamee, Floodplain Manager, L&C County

10:29:55 From Bill Naegeli to Everyone:
Bill Naegeli Sanders County Emergency Manager

10:29:56 From Monique Schofield to Everyone:
Monique Schofield, Safety and EMS Officer, University of Montana Western

10:29:57 From Chanel Waples to Everyone:
Chanel Waples, 911 Program Manager - Helena-Lewis & Clark County Communications Center

10:30:04 From Vickie Rauser to Everyone:
Vickie Rauser, Townsend City Council

10:30:14 From Amanda Cooley to Everyone:
Amanda Cooley, Powell County Planning Director/Floodplain Administrator

10:30:18 From Lanaina Upham; Glacier County DES to Everyone:
Lanaina Upham, Glacier County DES

10:30:19 From EDWARD JOHNSON to Everyone:
Edward Johnson

10:30:32 From Marshall Bloom to Everyone:
Marshall Bloom, Associate Director, Rocky Mountain Labs, Hamilton, MT

10:30:33 From Christopher Johnson to Everyone:
Christopher Johnson, Hazard Mitigation Planner, Wood

10:30:43 From Jess Secrest to Everyone:
Jess Secrest Meagher County Planning Board Chairman

10:30:47 From Tom & Judy Anderson to Everyone:
Judy Anderson, private landowner Bitterroot Valley

10:30:48 From Lori Dove to Everyone:
Lori Dove

10:30:48 From Michael (Mike) Kent, BVBoR to Everyone:
Still having a bad echo

10:30:57 From Melody to Everyone:
Echo really bad.

10:30:59 From Monique Schofield to Everyone:
Really bad feedback on the call.

10:31:07 From Amanda Morgan to Everyone:
The Admin for the Zoom should be able to mute anyone.

10:31:11 From Tom & Judy Anderson to Everyone:
All I hear is echo

10:31:11 From EDWARD JOHNSON to Everyone:
Edward Johnson Senior Plans Examiner City of Helena Building Department

10:31:12 From Logan Sand, FEMA R8 to Everyone:
phone # ending in 286 needs to mute

10:31:25 From natalie.schoen to Everyone:
Natalie Schoen, Hazard Mitigation Planner, Wood

10:31:27 From Pattie Berg to Everyone:
Someone has 2 microphones on and its causing a lot of feedback

10:31:30 From Kori Nobel Felix, PacifiCorp Hydro EM to Everyone:
HOST/ADMIN NEEDS TO MUTE ALL

10:31:33 From Bruce Tyler to Everyone:
Bruce Tyler St. Peter's Health

10:31:45 From Lisa Dennison to Everyone:
Lisa Dennison, Emergency Preparedness & Communicable Disease Coordinator with the Flathead City-County Health Department.

10:31:49 From Madison County DES to Everyone:
Madison County DES

10:31:55 From kmckinzie to Everyone:
Karren McKinzie - PHEP Coordinator, Sanders County Health Department.

10:31:55 From James Antal, Salvation Army Emergency Disaster Rep MT, WY to Everyone:
James Antal, Salvation Army Emergency Disaster Services Rep MT & WY

10:31:55 From Dallas and Jenny Erickson to Everyone:
Can't understand anyone. Many of you have not MUTED your phones and it is echoing in your phones. 1406****286 is one and maybe the problem.

10:31:57 From Daniel Caufield to Everyone:
Dan Caufield, Chief Operating Officer, VA Montana

10:32:00 From Doug Wheeler, Elkhorn COAD to Everyone:
Doug Wheeler, Elkhorn COAD

10:32:02 From Madison County DES-Jenn Martens to Everyone:
Jennifer Martens - Madison County DES

10:32:07 From Lori Dove to Everyone:
Lori Dove Mineral County DES

10:32:08 From John Rasmann to Everyone:
John Rasmann, Montana DEQ

10:32:10 From David Knoepke to Everyone:
David Knoepke, Director of Transportation Systems City of Helena

10:32:10 From Greg Coleman - Park Co OEM to Everyone:
Greg Coleman, Park County emergency manager.

10:32:20 From Bruce Tyler to Everyone:
The host can mute everyone.

10:32:22 From Jeff Brislawn, Wood to Everyone:
Jeff Brislawn, Project Manager, Wood

10:32:38 From Erin Carey - BLM to Everyone:
Erin Carey, BLM Missoula Field Manager

10:32:41 From Cory Kirsch-Jefferson County to Everyone:
Cory Kirsch-Jefferson County Commissioner

10:32:44 From Jeremy Fleege to Everyone:
Jeremy Fleege, Environmental Engineer, Montana Resources

10:32:48 From DeDe Rhodes to Everyone:
DeDe Rhodes Basin water and sewer and vfd

10:32:49 From P Lucashu to Everyone:
P Lucashu. Public. Ravalli County

10:33:01 From Susan Nicosia to Everyone:
Susan M Nicosia, City Manager Columbia Falls

10:33:19 From cbrophy to Everyone:
Cliff Brophy, Sweet Grass County DES; Big Timber

10:33:26 From Linda's iPhone to Everyone:
Linda Burch Sweet Grass Co Planning Board and Richard Burch

10:33:37 From abeck to Everyone:
Andy Beck, CNO Deer Lodge Medical Center

10:33:46 From Emily Geery to Everyone:

Is anyone else having trouble hearing?

10:33:49 From Amy Lommen to Everyone:
Amy Lommen, Mineral County Health Department; PHEP and Communicable Diseases

10:33:53 From Craig Johnson to Everyone:
Craig Johnson UYFSA Fire Chief

10:34:04 From Mark Clary to Everyone:
Mark Clary, Lake County

10:34:06 From Tiffany to Everyone:
yes i don't hear anything

10:34:07 From Patti Noble to Everyone:
cannot hear conversation, echos

10:34:08 From Heather Zufelt to Everyone:
Heather Zufelt Nurse Practitioner, Director of Psychiatry. Intensive Behavior Center Boulder MT

10:34:13 From cindy murray to Everyone:
Cindy Murray, General Manager, Flathead County Water District #1 - Evergreen.

10:34:28 From Kevin Larsen- Gallatin County Emergency Management to Everyone:
Kevin Larsen, Operations and Training Manager, Gallatin County Emergency Management. Can't hear anyone speaking.....

10:34:48 From jhauer to Everyone:
No one is speaking yet

10:34:49 From kmckinzie to Everyone:
I can't hear what your saying

10:34:56 From Amy Carr to Everyone:
Hi everyone, we'll be getting started in a few minutes

10:35:07 From Mike Stickney, MT Bureau of Mines & Geology to Everyone:
Mike Stickney Montana Bureau of Mines & Geology Earthquake Studies

10:35:08 From Melody to Everyone:
Can anyone hear?

10:35:16 From Roxanna Parker to Everyone:
Can the organizer mute everyone?

10:35:24 From sparky to Everyone:
Teresa Oyama, Liberty Place Inc/Whitehall Public Transportation

10:35:24 From Logan Sand, FEMA R8 to Everyone:
Maybe share a slide saying "please mute yourselves"

10:35:49 From Will Kussman to Everyone:
Good Morning Dan. We are doing pretty good. Busy with people being out and about. Still dealing with staffing issues..... How are things with you?

10:35:55 From rkinkade to Everyone:
Rusty Kinkade

10:36:12 From Tracy Rebo to Everyone:
Tracy Rebo, City Clerk/Treasurer with the City of Troy

10:36:15 From Dustin Kaste - NorthWestern Energy to Everyone:
No one is speaking and until the *268 phone call in number is muted, no one will be able to hear anyone else talk because of the dual audio. Press *6 to mute your phone if calling in.

10:36:16 From Jim Salmonsens to Everyone:
Jim Salmonsens, Montana State Prison

10:36:19 From rkinkade to Everyone:
Deputy OEM Sanders County

10:36:30 From sparky to Everyone:

Teresa Oyama, Transportation Manager, Liberty Place, Inc/Whitehall Public Transportation

10:36:37 From Dustin Kaste - NorthWestern Energy to Everyone:
*dual

10:36:43 From Chris Hanley to Everyone:
Chris Hanley, PWD, City of Columbia Falls

10:36:51 From MT-DES Mitigation Team to Everyone:
Thank you for your patience everyone the host is getting logged on to mute people.

10:36:58 From Roxanna Parker to Everyone:
Roxanna Parker, Northwest Montana United Way

10:37:09 From Patti Noble to Everyone:
Patti Noble, retired BCP, Town of Rexford, Lincoln county

10:37:35 From Dallas and Jenny Erickson to Everyone:
The people that aren't muted will hijack this meeting if they don't mute. You can watch the echoes on the phones that are not muted.

10:37:39 From Chris Hanley to Everyone:
Getting a lot of reverb

10:37:44 From Pattie Berg to Everyone:
I've seen the same feedback happen when someone is using a bluetooth speaker and their computer speaker.

10:37:47 From Linda's iPhone to Everyone:
Terrible feedback loop...

10:37:56 From SteveW to Everyone:
Steve Windbigler Maintenance Director, Evergreen School Dist. #50

10:38:26 From Jeremy Grotbo to Everyone:
Jeremy Grotbo, City & County of Butte-Silver Bow GIS Dept.

10:38:46 From Frank Finnegan 15-90 S&R to Everyone:
Frank Finnegan 15-90 S&R

10:39:03 From Heather Mumby - Cayuse to Everyone:
Heather Mumby, Cayuse Prairie School Clerk and Chair of our Crisis Management Team.

10:39:19 From Linda's iPhone to Everyone:
Has the meeting started? Can't hear anyone now

10:39:34 From J.P. Gallagher to Everyone:
J.P. Gallagher Butte-Silver Bow Chief Executive

10:40:05 From Logan Sand, FEMA R8 to Everyone:
is there a co-host?

10:40:14 From LaDana Hintz to Everyone:
LaDana Hintz, Jefferson County Planning Dept.

10:41:19 From tglasman to Everyone:
Has not started yet . everyone needs to mute there phones/computers

10:41:31 From Dallas and Jenny Erickson to Everyone:
Good question. Where are you host? Many are still unmuted.

10:41:32 From MT-DES Mitigation Team to Everyone:
We are working on it.

10:41:33 From DeDe Rhodes to Everyone:
I'm getting a headache

10:41:36 From Kitty Songer to Everyone:
Kitty Songer, Central Region Healthcare Coalition Coordinator, MHA

10:43:07 From Matt Haggerty Park Electric to Everyone:
Matt Haggerty Park Electric coop

10:44:17 From Erik Hoover to Everyone:

Erik Hoover Ravalli County

10:44:29 From Maria Stoppler, CEO GCHD to Everyone:
Maria Stoppler, CEO Granite County Hospital District

10:44:33 From Tom Moody to Everyone:
Tom Moody, NorthWestern Energy, Kalispell District

10:44:40 From A205478 to Everyone:
Eileen Steilman, Environmental Engineer, REC Silicon

10:44:40 From City of Thompson Falls to Everyone:
Neil Harnett City of Thompson Falls Public works director

10:44:47 From Doug Kuenzli | Env. Manger | Ash Grove to Everyone:
Doug Kuenzli, Environmental Manager, Ash Grove

10:44:48 From Randy Brodehl, Flathead County Commissioner to Everyone:
Randy Brodehl, Flathead County Commissioner

10:45:12 From Arnold Sorrell to Everyone:
Arnold Sorrell, Mission Valley Power

10:45:12 From rkinkade to Everyone:
Rusty Kinkade Deputy OEM Sanders County

10:45:21 From Pattie Berg to Everyone:
Good Morning! Pattie Berg, City Council member/President City of White Sulphur Springs

10:45:31 From jhauer to Everyone:
Jesse Hauer-Emergency Preparedness Jefferson County Health Department

10:45:34 From Tom Wagenknecht to Everyone:
Tom Wagenknecht, Beaverhead County DES, Land Use Sanitation

10:45:58 From iPhone to Everyone:
Tim schuch Whitefish Police

10:46:00 From Brent McDaniel - Avista to Everyone:
Brent McDaniel, Hydro Safety Specialist, Avista

10:47:00 From Thomas Lane to Everyone:
what was the slido code?

10:47:05 From Craig Workman (City of Whitefish) to Everyone:
What was the slido.com code?

10:47:23 From kmckinzie to Everyone:
What was the participant code for slido.com?

10:47:24 From Amy Carr - Wood E&IS to Everyone:
slido.com #WestHMP

10:47:34 From dale.nelson@cskt.org to Everyone:
Dale Nelson Emergency management CSKT

10:48:16 From Terry to Everyone:
Terry Wiegand Fire Chief Blankenship RFD

10:48:44 From Bridget Mancini to Everyone:
Bridget Mancini

10:49:14 From Bridget Mancini to Everyone:
Ravalli County Fire Adapted Communities Coordinator- DNRC

10:49:21 From Rosenbaum, Nick to Everyone:
Nick Rosenbaum Montana Dept of Transportation Equipment Shop Superintendent

10:49:34 From J.P. Gallagher to Everyone:
golf

10:49:36 From LaRinda Spencer to Everyone:
LaRinda Spencer, Broadwater Conservation District Administrator

10:49:41 From Patti Noble to Everyone:
Working in the yard

10:49:46 From Susan Hawthorne MT Volunteer American Red Cross to Everyone:
Having coffee with a friend

10:49:49 From DeDe Rhodes to Everyone:
cutting wood in the mountains

10:49:57 From aharcourt to Everyone:
Amanda Harcourt Director of the Asbestos Resource Program for Lincoln County

10:50:12 From Linda's iPhone to Everyone:
Linda Burch Sweet Grass Co Planning Board and Richard Burch

10:50:36 From Linda's iPhone to Everyone:
Scuba diving

10:50:37 From Randy Brodehl, Flathead County Commissioner to Everyone:
Working budget

10:51:00 From Linda's iPhone to Everyone:
Yes

10:51:04 From tglasman to Everyone:
Troy Glasman- Glacier Park International Airport Fire Department Chief ARFF/OPS

10:51:05 From kmckinzie to Everyone:
NO

10:51:12 From Craig Johnson to Everyone:
Yes

10:51:13 From Ginger Galiger Town of Sheridan to Everyone:
No

10:51:13 From J.P. Gallagher to Everyone:
no

10:51:22 From Randy Brodehl, Flathead County Commissioner to Everyone:
yes

11:02:47 From Dallas and Jenny Erickson to Everyone:
Who are "stake holders"? Is the public included?

11:03:44 From MT-DES Mitigation Team to Everyone:
If you are on this meeting you were identified as a Stakeholder by your community.

11:07:25 From Randy Brodehl, Flathead County Commissioner to Everyone:
Have to sign off. rlb

11:10:07 From cbrophy to Everyone:
Sweet Grass DES has a LEPC meeting to head to. Thanks for info, looking forward to working with everyone

11:15:21 From Daniel Caufield to Everyone:
Sharing Job opportunity for Emergency Manager replacing Paul Reyes -
<https://www.usajobs.gov/job/656738500>

11:16:45 From Dallas and Jenny Erickson to Everyone:
Will these slides be sent out to everyone for review?

11:17:06 From Juliana Prospero, Wood E&IS to Everyone:
Yes. We will be providing the slides following the meeting!

11:17:23 From Dallas and Jenny Erickson to Everyone:
Thanks!

11:18:11 From Amy Carr - Wood E&IS to Everyone:
Note HMGP and Post Fire grants are considered competitive in the State of Montana

11:25:06 From Craig Johnson to Everyone:
Any fuel reduction grants for private property?

11:26:08 From MT-DES Mitigation Team to Everyone:
Craig if you can send me an email. We can discuss this.

11:26:27 From MT-DES Mitigation Team to Everyone:
Nicole.Erickson@mt.gov

11:26:40 From Craig Johnson to Everyone:
Thank you

11:27:55 From Michael Kropp DEQ PWS Kalispell to Amy Carr - Wood E&IS(Direct Message):
Seems like DEQ PWS should be on that list of stakeholders.

11:28:11 From Ginger Galiger Town of Sheridan to Everyone:
Schools

11:29:00 From DeDe Rhodes to Everyone:
communication is key

11:29:40 From Vickie Rauser to Everyone:
Have another meeting. Thanks for what I've seen so far.

11:31:24 From Michael Kropp DEQ PWS Kalispell to Everyone:
Department of Environmental Quality Public Water Supply

11:32:39 From Logan Sand, FEMA R8 to Everyone:
stakeholder can help disseminate information out through their networks

11:33:10 From Michael (Mike) Kent, BVBoR to Everyone:
And also help with education to the public

11:33:55 From Mike Stickney, MT Bureau of Mines & Geology to Everyone:
No earthquakes?

11:34:08 From Pattie Berg to Everyone:
What if your county isn't listed?

11:34:09 From Juliana Prospero, Wood E&IS to Everyone:
Earthquakes is abbreviated as EQ

11:34:32 From Barry to Everyone:
Why isn't Missoula County in this process?

11:34:58 From Bruce Tyler to Everyone:
How old are these rankings. I would argue that "Disease" might be increased to H all things considered.

11:35:06 From MT-DES Mitigation Team to Everyone:
They have decided to opt-out of the process this time around.

11:36:09 From Michael Kropp DEQ PWS Kalispell to Everyone:
Compromised water systems

11:36:38 From Chelsia Elmore to Everyone:
supply chain disruptions

11:38:09 From Linda's iPhone to Everyone:
Low Level flooding and drought

11:39:19 From Craig Johnson to Everyone:
GeoEngineering airiael spraying

11:40:10 From Chelsia Elmore to Everyone:
cyber attacks healthcare systems 2019, 2021

11:41:52 From jhauer to Everyone:
Air shed pollution from not only from our areas burning, but other areas burning

11:42:37 From MickP to Everyone:
Are the each county hazard mitigation plans available to the public?

11:42:56 From MT-DES Mitigation Team to Everyone:
Yes they are public documents.

11:46:25 From DeDe Rhodes to Everyone:

rcap

11:48:43 From Dallas and Jenny Erickson to Everyone:
What is CWPP?

11:49:00 From MT-DES Mitigation Team to Everyone:
Community Wildfire Protection Plan

11:49:58 From Craig Johnson to Everyone:
Long term electrical blackouts

11:52:02 From Barry to Everyone:
I may have missed something, but who or from where is the Wood team

11:52:49 From Jeff Brislaw, Wood to Everyone:
We have an office in Helena and several of us are based in CO.

11:52:57 From MT-DES Mitigation Team to Everyone:
The Wood team is the consulting team that MT-DES choose to complete this planning process.

11:54:55 From DeDe Rhodes to Everyone:
basin days in august

11:55:45 From Chelsia Elmore to Everyone:
regional response Task Force mtgs

11:57:32 From DASTewart to Everyone:
MT Folk Festival

11:57:53 From Bruce Tyler to Everyone:
National Park entrances

11:58:26 From Pam Lucashu to Everyone:
Where can we access the zoom recorded call?

11:58:42 From MT-DES Mitigation Team to Everyone:
I will be sending it out next week.

11:59:07 From Patti Noble to Everyone:
how can we get a list of our county contacts for the plan development?

11:59:12 From Susan Hawthorne MT Volunteer American Red Cross to Everyone:
Great information, looking forward to moving forward. Need to run, thank you

11:59:46 From DeDe Rhodes to Everyone:
Tuesday or Wednesday is best for me.

12:00:40 From Juanita Nelson - Flathead County OES to Everyone:
How soon can we expect to receive the Data Collection Guides?

12:01:21 From Ewood to Everyone:
Great job Amy and Wood Team!

12:01:29 From Mark Clary to Everyone:
Mark Clary

12:01:35 From kkenison to Everyone:
Kathy Kenison, IT Manager, Butte-Silver Bow

12:01:37 From Mark Clary to Everyone:
Lake County OEM

12:01:43 From Rand Dickson to Everyone:
Rand Dickson, Powell EMS Director.

12:01:44 From Dan to Everyone:
Thank you Amy!

12:01:46 From Madison County DES to Everyone:
Thank you!

12:01:47 From Abigail Byers, RN, St Luke Community Healthcare to Everyone:
Abigail Byers abyers@stlukehealthcare.org St Luke Community Healthcare Director of Nursing.

- 12:02:07 From Joe Wojton MTVOAD to Everyone:
Great Job I look forward to the rest of the process
- 12:02:08 From DeDe Rhodes to Everyone:
thank you. you have given me a lot to think about.
- 12:02:12 From Spencer Gilchrist (CAP) to Everyone:
Spencer Gilchrist, commander, montana civil air patrol
- 12:02:18 From Chelsia Elmore to Everyone:
Chelsia Elmore, Logan Health System Emergency Manager, Flathead, Lincoln, Lake, Glacier, Toole, Pondera counties
- 12:02:20 From Teresa Oyama to Everyone:
Will this presentation be available to download, print?
- 12:02:42 From MT-DES Mitigation Team to Everyone:
Teresa this presentation will be sent out to everyone.
- 12:02:45 From Pattie Berg to Everyone:
If a community doesn't participate in ths, does it affet potential fema funding?
- 12:02:53 From Pattie Berg to Everyone:
affect
- 12:03:11 From Ed Shindoll to Everyone:
Ed Shindoll Fire Chief Broadwater County Rural Fire District

wood.

MT Western Region Kickoff

Poll results

slido

Table of contents

- If you didn't have to be in the meeting today, what would you rather be doing?
- Have you participated in a hazard mitigation plan before?
- What key stakeholders should be involved in this process?
- What additional hazards should be considered for the Regional Plan?
- What other significant hazards events have occurred in the past 5 years? (Note which jurisdiction(s) was impacted in your response)
- What other existing or recent plans, reports, or studies should be reviewed for this planning process?
- What opportunities exist to coordinate or integrate the Regional Hazard Mitigation Plan with other planning mechanisms?
- Are there any upcoming opportunities for outreach at scheduled public meetings or events?

If you didn't have to be in the meeting today,
what would you rather be doing?

071



Have you participated in a hazard mitigation plan before?

0 8 5

Yes



No



What key stakeholders should be involved in this process?

0 4 5

(1/3)

- non ngo
- MT National Guard
- Railroad
- Redundant communication capacities
- Dam safety
- major industries
- News papers
- Senior citizen orgs/HOAs
- Volunteer groups.
- Any of the FEMA ESF's
- Landowners, Conservation Districts, Sheriffs office,
- Red Cross, Fire departments, churches
- State and federal law Enforcement
- irrigation districts
- Agriculture food production
- Elected officials Administrators
Planning and Zoning Public Works
Emergency responders- police, fire, ambulance Public utilities
- Fairgrounds
- DES, County Commissioners, Planning Staff, Fire Departments, Law

What key stakeholders should be involved in this process?

0 4 5

(2/3)

- enforcement, Schools, Utility providers and Cell phone providers
- Churches and religious organizations
- Private Industry
- American Red Cross
- Hospitals Schools Law enforcement
- Local Electric Co-ops, communications companies,
- Law Enforcement , Fire, medical , Search and Rescue
- Hospital, Law Enforcement, Fire, local government, red cross,
- Developers
- Healthcare coalitions LEPC
- Police, fire and health care
- Hospitals
- public health departments
- VOADS/COADS
- Neighboring Municipalities
- Local fire departments, Building associations, Realtor Associations,
- Healthcare Coalitions
- Ski resorts
- Healthcare / Hospitals
- Non profit's disaster response agencies

What key stakeholders should be involved in this process?

0 4 5

(3/3)

- Police & Fire, community leaders,
- Search and Rescue
- City's and Towns
- EMS
- County DES Land Mgt Agencies
- Public Health
- Schools
- county planners
- Hospitals
- Public works
- County OEM
- Fire, law, DES, local government, healthcare, schools
- hospitals/fqhc's
- Electric cooperatives
- Federal and State partners.
- natural resources and water conservation/efficiency
- Healthcare
- Medical Equipment Providers
- Major land owners
- Everyone is a stakeholder
- Hospitals
- Hospitals and Healthcare systems
- Conservation districts

What additional hazards should be considered for the Regional Plan?

031

(1/2)

- Out of states moving in
- cyber-attacks infostructure, grid, Dam , hazmat storage
- Outbreaks at major housing installations (e.g., universities, prisons, etc.).
- Nuclear ordinance/radioactive release
- Blackouts
- Food supply loss
- Mass causality's
- catastrophic ildfire, Forest Degradation, widespread power outages, communication
- Industrial Accidents
- Active Killer?
- Electric Grid issues
- Supply Chainssupply chain
- Pandemics, disease, terrorism
- Resource Shortages
- Irrigation dams, multiple in Ravalli County in most of the west side canyons
- cyber attacks
- Power outages
- Train Derailment
- Power or communications disruption

What additional hazards should be considered for the Regional Plan?

031

(2/2)

- Pandemic should probably move up the scale.
- Bank erosion
- Dams
- Erosion/rockfall/landslide
- Cyber security
- Running out of drinking water
- Food supply disruptions
- Bio Hazards - Labs
- Mutual Aid
- Dams
- flash flood/debris flow
- Cyber attacks
- Dams
- domestic terrorism and civil disruption
- Pandemics
- Dams

What other significant hazards events have occurred in the past 5 years? (Note which jurisdiction(s) was impacted in your response)
(1/2)

- Population growing faster than resources available
- City/county streets and infrastructure can't keep up with growing community's
- Cyberterrorism
- Elicit drug haz mat. All counties
- Drought
- Power grid failure
- Level 4 Lab in Ravalli County leak
- Havre snow storm
- COVID is the obvious one
- Urban avalanche Increased human trafficking Drought
- Migration of Californians
- earthquakes, fires
- Flathead Valley Schools Cyberterrorism Attack (2018?)
- Woods Creek, Deep Creek Fire 2021
- Long hot summers lately
- Ice jams at bridges due to runoff/freeze cycle
- Mt Jumbo Avalanche
- Multiple Wind Events with multi-day power outages in NW Montana (Lincoln, Flathead, Lake, Sanders)

What other significant hazards events have occurred in the past 5 years? (Note which jurisdiction(s) was impacted in your response)
(2/2)

- Homeless and biohazards
- Forest fires
- Unknown, I am one of those "people from out of state!"
- Caribou Fire 2017. Lost approximately 11 homes and 27 structures
- draught, most of Montana
- 2017 Lincoln earthquake
- Large events
- train derailment
- predators

What other existing or recent plans, reports, or studies should be reviewed for this planning process?

0 2 2

(1/2)

- COOP, Wildfire plan, CWFPF, Population protection plan. evacuation plans, county emergency plan utilizing life liines
- County's need to TALK to electrical companies before approving subdivision.
- community economic development plans (CEDS)
- Healthcare Coalition HVAs, Preparedness & Response Plans and Annexes
- Hospital Evacuation Plans
- Growth Policy, Subdivision Regulations, Sanitation plans
- Utility Masterplans (Water, Sewer)
- Growth Policy
- After Action Reviews
- COOP, EOP, EAP, CWPP
- Public Health Annexes to County EOP's
- PER'S
- NRCS Targeted Implementation Plans for fuel mitigation
- Active shooter response
- Emergency Action Plans for Dams
- Ravalli County is in the process of updating it's CWPP

What other existing or recent plans, reports, or studies should be reviewed for this planning process?

0 2 2

(2/2)

- Growth plan
- Growth Plans Comprehensive
Transportation plans
- growth policy
- CIP
- Military
- EAP
- Population Protection Plans
- Capital improvement plans (CIP)
- CWPP

What opportunities exist to coordinate or integrate the Regional Hazard Mitigation Plan with other planning mechanisms?

- Cross county mutual aid agreements
- site design standards and setback reqs.
- Functional and Tabletop EAP exercises
- Growth Policy
- Flathead County Regional Plan
- Growth policy update, and revisions to subdivisions reqs.
- TEP/IPP
- Growth Policy, Comprehensive Plan, Fire Protection Plan, CWPP
- County hazard mitigation plans
- Healthcare Coalitions
- NRCS fuel reduction plans, existing and potential
- Never re-invent the wheel.
- Ravalli County CWPP
- CWPP

Are there any upcoming opportunities for outreach at scheduled public meetings or events?

- out door concerts.
- Baseball Games
- Beer fests
- Library events
- July 4th Parade
- LEPC
- blood drive
- Ravalli County Fair Hamilton and Stevensville Farmers Market
- Pride parade in Helena
- Rodeo